



*.NET Family of Products
Developer Guide*

Visit our online knowledge base at
<http://www.adserverolutions.com/knowledge.html>

Table of Contents

1. Introduction	4
2. Framework Architecture	5
3. Project Directory Structure	7
4. Instructions for Source Package Compilation	8
5. API Definition for Framework Components	12
WebF.Common.Configuration	12
Common.Configuration.View.....	12
Common.Configuration.AppMenu	12
Common.Configuration.ViewCollection.....	12
Common.Configuration.AppRoles	12
Common.Configuration.FrameworkVersion	14
Common.Configuration.DSCollection	14
Common.Configuration.DSCollection.DSEnumerator	16
Common.Configuration.DBSourceHandler.....	16
Common.Configuration.CommandType	17
Common.Configuration.AppRolesCollection.....	17
Common.Configuration.AppRolesCollection.DSEnumerator.....	19
Common.Configuration.AMCollection	19
Common.Configuration.DataSource.....	19
Common.Configuration.CmdCollection.....	20
Common.Configuration.CmdCollection.DSEnumerator.....	22
WebF.Common.DBLayer	22
Common.DBLayer.clsDBLayer	22
WebF.Common.Encryption	23
Common.Encryption.Rijndael.clsRijndael	23
Common.Encryption.clsbase64.clsbase64.....	25
Common.Encryption.clsProprietary.clsProprietary	25
Common.Encryption.md5.clsmd5	26
WebF.Common.ExceptionHandler.....	26
WebF.Common.Logger	26
Common.Logger.clsLogger	26
WebF.Common.Messaging	27
Common.Messaging.clsEmail	27
WebF.Common.Security.....	27
Common.Security.clsApplicationSession.....	27
Common.Security.clsUserSession	28
WebF.Common.XMLProcessor	29
Common.XMLProcessor.clsXMLProcessor	29
WebF.Licensing	30
WebF.Mobile.TransactionBroker	30
Mobile.TransactionBroker.MobileTransactionManager	30
WebF.Samples	31
Samples.clsWebfSample.....	31
WebF.UI.BusinessManager	34
UI.BusinessManager.clsBusinessManager	34
UI.BusinessManager.clsAuthentication.....	35
WebF.UI.GenericBusinessMethods.....	35
UI.GenericBusinessMethods.clsGenericBusinessMethods	35

WebF.UI.MenuBuilder	36
UI.MenuBuilder.clsMenuBuilder	36
WebF.UI.QueryString.....	36
UI.QueryString.clsQueryString	36
WebF.UI.TransactionBroker.....	37
UI.TransactionBroker.TransactionManager	37
WebF.UI.XSLTransform	38
UI.XSLTransform.clsXSLTransform	38
WebF.WebService.TransactionBroker	39
WebService.TransactionBroker.WebServiceTransactionBroker	39
6. API Definition for Ad Server Components	41
Webf.NET.OnlineAdvertising.....	41
NET.OnlineAdvertising.clsAccounts	41
Methods.....	41
NET.OnlineAdvertising.clsPlacements	50
Methods.....	51
NET.OnlineAdvertising.clsAds	55
Methods.....	55
NET.OnlineAdvertising.clsCampaigns.....	55
Methods.....	56
NET.OnlineAdvertising.clsStatistics	58
Methods.....	59
NET.OnlineAdvertising.clsLogs.....	61
NET.OnlineAdvertising.clsBilling	61
Methods.....	61
NET.OnlineAdvertising.clsReference	67
Methods.....	67
7. API Definition for Adserver Solutions Components	73
Webf.NET.OnlineAdvertising	73
NET.OnlineAdvertising.clsAccounts	73
NET.OnlineAdvertising.clsPlacements	82
NET.OnlineAdvertising.clsAds	85
NET.OnlineAdvertising.clsCampaigns.....	86
NET.OnlineAdvertising.clsStatistics	88
NET.OnlineAdvertising.clsLogs.....	91
NET.OnlineAdvertising.clsBilling	91
NET.OnlineAdvertising.clsReference	96

1. Introduction

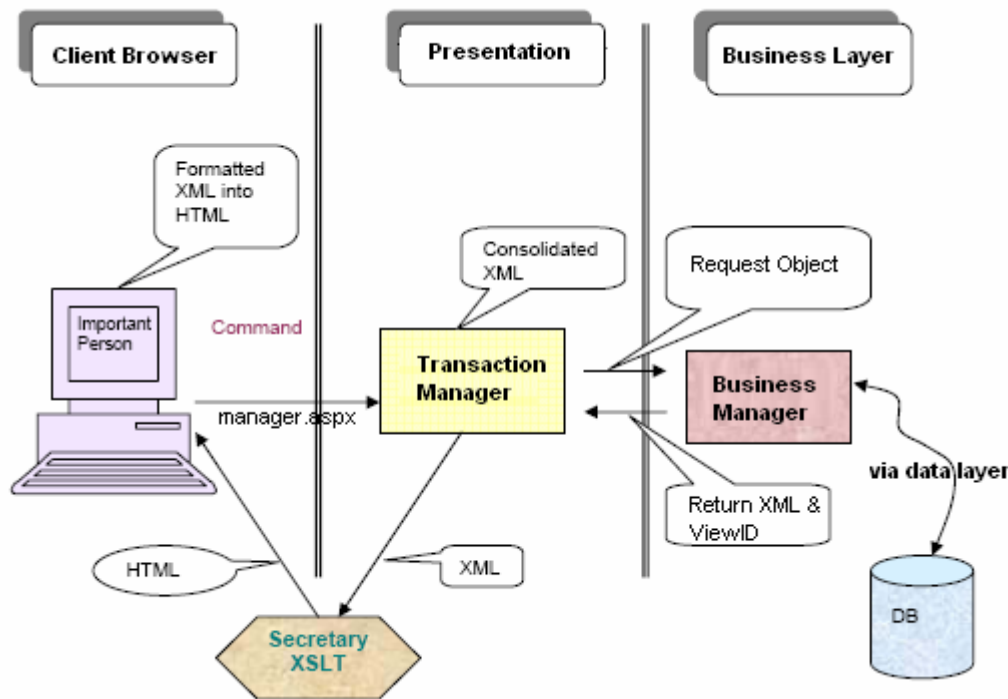
This developer guide is useful for customers who wish to engage their own IT teams to extend this application. This document provides the following information:

- Framework Architecture
- Project directory structure
- Compilation of source package
- API definition for framework components
- API definition for Adserver components

Intended readership of this document is architect, design and development teams.

2. Framework Architecture

Ad Server products are built using a 3-tier architecture, as depicted below.



Ad Server products use a framework called WebFrameworks. This framework comprises a secure, robust and tested architecture and several pre-built components that enable application developers to quickly build applications on top of the framework layer.

Developers who wish to enhance the current Ad Server system will be able to find numerous examples of how various framework APIs are used. This document also provides a full list of framework APIs.

If required, you may request a developer guide for WebFrameworks that will provide details on how to use the framework and its code generation capabilities. ApplicationBuilder directory of your package provides an Application Builder that can be used for production support and development activities. Password for each role is temp.

Web Frameworks Packages/Namespace

Your WebF package will consist of namespaces/packages as shown below. These packages are broadly classified into **Common** and **UI**.

- WebF.Common.Compression
- WebF.Common.Configuration
- WebF.Common.DBLayer
- WebF.Common.Encryption
- WebF.Common.ExceptionHandler
- WebF.Common.Logger
- WebF.Common.Messaging

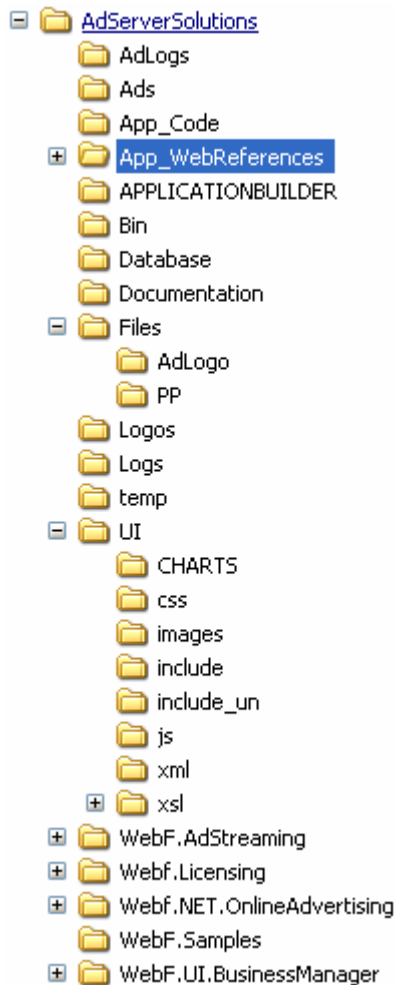
- WebF.Common.Security
- WebF.Common.WebServices
- WebF.Common.XMLProcessor
- * WebF.UI.BusinessManager
- WebF.UI.GenericBusinessMethods
- WebF.UI.MenuBuilder
- WebF.UI.QueryString
- WebF.UI.TransactionBroker
- WebF.UI.TransactionBusinessBridge
- WebF.UI.XSLTransform

* This namespace is made available along with source code. This source code will work as a starting point to build any new application. All other namespaces/packages are provided as dynamic linked libraries.

Flow Explained

- Some common patterns used are MVC, Command Processor, Builder and VIP pattern.
- Any URL request to the web server must consist of a commandType that is passed as querystring to manager.aspx.
- Each commandType corresponds to a feature in the application and is an entry point for rendering any web page.
- A transaction manager is a first point of entry into the framework .Transaction manager performs several validation functions before passing on the web request to business manager.
- The common business manager may further be extended to build a complete application.
- Business managers will call data layer to execute SQLs.
- Data layer will return record set in xml format.
- XML can then be rendered in html format using standard transformation libraries (DOM or XSL).
- Returned html is rendered on the browser.

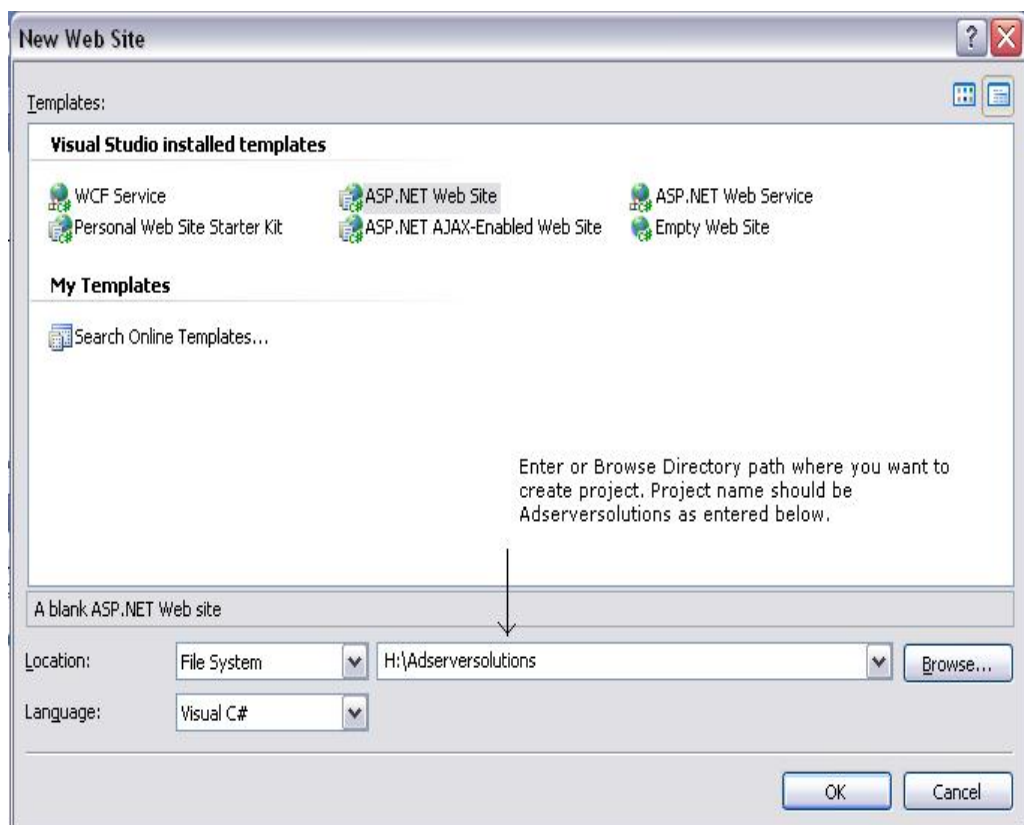
3. Project Directory Structure



1. AdLogs, Ads, Files, Logs, Logos – All these directories contain files uploaded by users or generated by the system.
2. App_WebReferences – these contain wsdl files for communication of web server with business servers in enterprise environment.
3. ApplicationBuilder – This is a desk top based thin application that can be used to manage your development process. This includes code generation for common application features.
4. Bin – This contains all compiled dlls.
5. Database – This contains all database scripts that will be used to set up the application.
6. Documentation – This can be used to store documents.
7. Logs – This directory will contain log file. Logs are generated by the application.
8. UI
 - a. Charts – charting component
 - b. Css – Cascading stylesheets
 - c. Images – images used in the application
 - d. Include – all include files. These include files are part of manager.aspx.
 - e. Include_un – all include files for aspx pages that can be integrated with the portal and are not part of the secure application access features.
 - f. Js – all javascripts
 - g. Xml – store xml files that may be consumed by the application. Adserver currently does not use any xml files.
 - h. Xsl – store xsl files that may be used to process the xml files or process in-memory xmls in the business components.
9. Webf.AdStreaming – This contains all code for adserver rotation components in several .cs files.
10. Webf.Licensing – This contains code for implementation of licensing mechanism.
11. Webf.NET.OnlineAdvertising – This contains all code for adserver online interface.
12. Webf.Samples – This contains some sample code for those starting out with building applications using web frameworks.
13. Webf.UI.BusinessManager – this contains code to drive all business logic and processes UI requests and hands them over to business components.

4. Instructions for Source Package Compilation

1. Download AdServerSolutions Source Package.
2. Unzip AdServerSolutions Source Package.
3. Open Visual Studio .net 2005 and Create New Web Site Project. Follow below steps to create new project.
 - In Visual Studio .net, Click on File -> New -> Web Site
 - Select Asp.Net Web Site in dialog box. Select File System in location drop down, Select Visual C# in language drop down and enter or browse path where you want to create project. Project name should be Adserversolutions and click ok. See below image for more details.

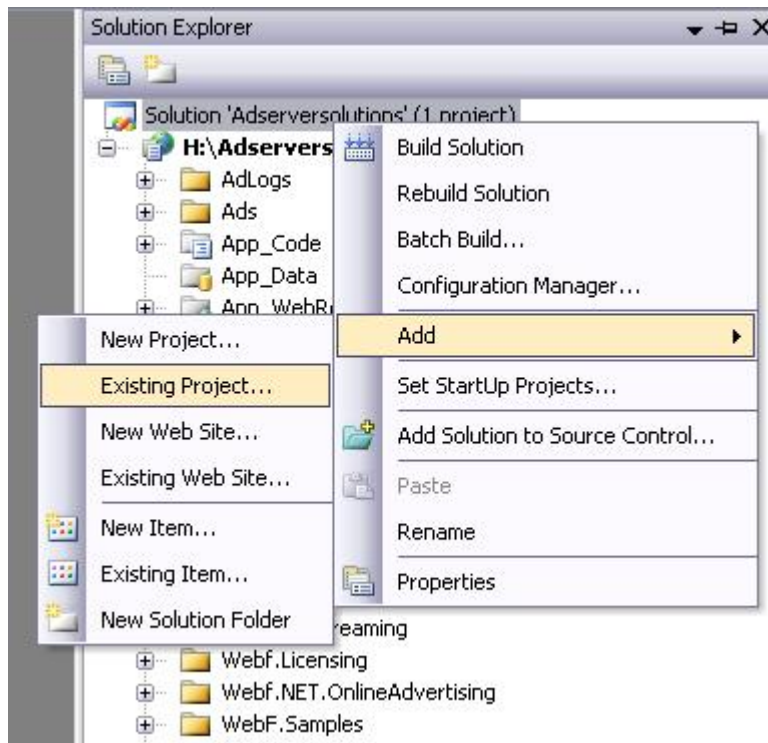


- Now Close Visual Studio .net.
4. Copy all folders/content of unzipped Adserversolutions package to your directory where you have created new Asp Web site project.
 5. Now in Windows Explorer, Go to MyDocuments -> Visual Studio 2005 -> Projects -> Adserversolutions. Here you will find Adserversolutions solution file, Copy this file to directory where you have created project. It will ask you to overwrite existing solution file, overwrite existing solution file.
 6. Now open AdserverSolution solution file just you have copied to your project directory.

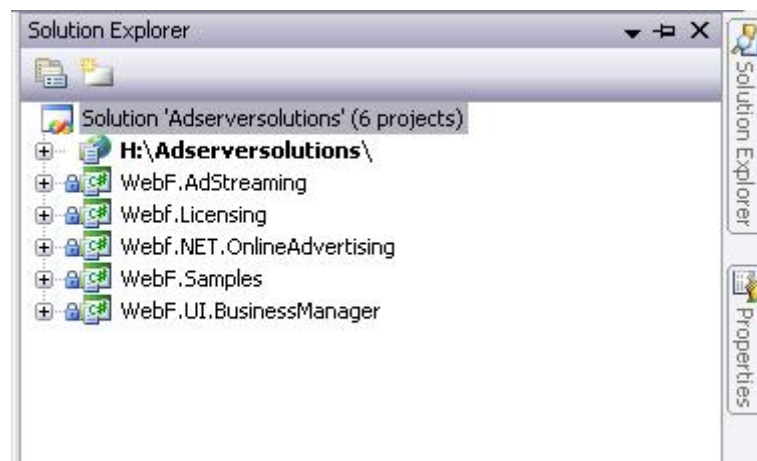
7. Click on Solution explorer in right panel. You will see directory structure like below.



8. Now you have to add 5 class projects to Adserversolutions project. For that follow the below steps.
 - Right click on solution file and click on add existing project as shown in image below.



- Now clicking on existing project, browse your project directory, open WebF.UI.BusinessManager folder and select WebF.UI.BusinessManager project file and click open.
- Repeat above steps for WebF.Samples, Webf.NET.OnlineAdvertising, WebF.AdStreaming and Webf.Licensing project.
- After adding all 5 projects you will see directory structure in solution explorer as shown in below image.



9. Now in Visual Studio, click on File -> Source Control -> Change Source Control. Click on Unbind and click ok.
10. Now open your project directory in Windows explorer and open bin folder. Delete below listed .dll from there.

- WebF.UI.BusinessManager.dll
- WebF.Samples.dll
- WebF.AdStreaming.dll
- Webf.NET.OnlineAdvertising.dll
- Webf.Licensing.dll

11. Now in Visual Studio, Click on menu Build -> Rebuild Solution, to compile AdServerSolutions source code.

5. API Definition for Framework Components

WebF.Common.Configuration

Common.Configuration.View

Summary description for View.

Properties

Id

CallType

ReturnType

Path

Methods

Constructor:

- ***Common.Configuration.View(System.String, System.String, System.String, System.String)***

Parameters

id, callType, returnType, path,

Constructor:

- ***Common.Configuration.View***

Common.Configuration.AppMenu

Summary description for AppMenu.

Common.Configuration.ViewCollection

Summary description for ViewCollection.

Common.Configuration.AppRoles

Summary description for Roles.

Properties

index, ,

Methods

Constructor:

- *Common.Configuration.AppRoles*

Constructor:

- *Common.Configuration.AppRoles(WebF.Common.Configuration.AppRolesCollection)*

Parameters

value,

Constructor:

- *Common.Configuration.AppRoles(WebF.Common.Configuration.AppRoles[])*

Parameters

value,

- *Return Value*

,

- *Return Value*

,

- *Parameters*

value,

Return Value

,

- *Parameters*

value,

- *Parameters*

value,

- *Parameters*

value,

Return Value

,

- *Parameters*
array, index,

- *Parameters*
value,

Return Value

,

- *Parameters*
index, value,

- *Return Value*

,

- *Parameters*
dsName,

- *Parameters*
value,

Common.Configuration.FrameworkVersion

Summary description for FrameworkVersion.

Methods

- *Version*

Return Value

,

- *AppVersion*

Return Value

,

Common.Configuration.DSCollection

Properties

Item(System.Int32)

index, ,

Methods

Constructor:

-

Common.Configuration.DSCollection(WebF.Common.Configuration.DSCollection)

Parameters

value,

Constructor:

-

Common.Configuration.DSCollection(WebF.Common.Configuration.DataSource[])

Parameters

value,

- *SingleDS*

Return Value

,

- *CollectionDs*

Return Value

,

- *Add(WebF.Common.Configuration.DataSource)*

Parameters

value,

Return Value

,

- *AddRange(WebF.Common.Configuration.DataSource[])*

Parameters

value,

- *AddRange(WebF.Common.Configuration.DSCollection)*

Parameters

value,

- *Contains(WebF.Common.Configuration.DataSource)*

Parameters

value,

Return Value

,

- *CopyTo(WebF.Common.Configuration.DataSource[],System.Int32)*

Parameters

array, index,

- *IndexOf(WebF.Common.Configuration.DataSource)*

Parameters

value,

Return Value

,

- *Insert(System.Int32,WebF.Common.Configuration.DataSource)*

Parameters

index, value,

- *GetEnumerator*

Return Value

,

- *Remove(System.String)*

Parameters

dsName,

- *Remove(WebF.Common.Configuration.DataSource)*

Parameters

value,

Common.Configuration.DSCollection.DSEnumerator

Common.Configuration.DBSourceHandler

Methods

- *Create(System.Object,System.Object,System.Xml.XmlNode)*

Parameters

parent, context, node,

Return Value

,

Common.Configuration.CommandType

Summary description for CommandType.

Methods

Constructor:

- *Common.Configuration.CommandType(System.String, System.String, System.String, System.String, System.String, System.String, System.String, System.String)*

Parameters

id, dbObjectType, dbObject, viewID, type, dataSource, featureType, secure,

Constructor:

- *Common.Configuration.CommandType*

Common.Configuration.AppRolesCollection

Summary description for AppRolesCollection.

Properties

Item(System.Int32)

index, ,

Methods

Constructor:

- *Common.Configuration.AppRolesCollection*

Constructor:

- *Common.Configuration.AppRolesCollection(WebF.Common.Configuration.AppRolesCollection)*

Parameters

value,

Constructor:

- ***Common.Configuration.AppRolesCollection(WebF.Common.Configuration.AppRoles[])***

Parameters

value,

- ***SingleDS***

Return Value

,

- ***CollectionDs***

Return Value

,

- ***Add(WebF.Common.Configuration.AppRoles)***

Parameters

value,

Return Value

,

- ***AddRange(WebF.Common.Configuration.AppRoles[])***

Parameters

value,

- ***AddRange(WebF.Common.Configuration.AppRolesCollection)***

Parameters

value,

- ***Contains(WebF.Common.Configuration.AppRoles)***

Parameters

value,

Return Value

,

- ***CopyTo(WebF.Common.Configuration.AppRoles[],System.Int32)***

Parameters

array, index,

- *IndexOf(WebF.Common.Configuration.AppRoles)*

Parameters

value,

Return Value

,

- *Insert(System.Int32, WebF.Common.Configuration.AppRoles)*

Parameters

index, value,

- *GetEnumerator*

Return Value

,

- *Remove(System.String)*

Parameters

dsName,

- *Remove(WebF.Common.Configuration.AppRoles)*

Parameters

value,

Common.Configuration.AppRolesCollection.DSEnumerator

Common.Configuration.AMCollection

Summary description for AMCollection.

Common.Configuration.DataSource

Methods

Constructor:

•

Common.Configuration.DataSource(System.String, System.String, System.String, System.String)

Parameters

connString, connType, database, name,

Common.Configuration.CmdCollection

Summary description for CmdCollection.

Properties

Item(System.Int32)

index, ,

Methods

Constructor:

- *Common.Configuration.CmdCollection*

Constructor:

- *Common.Configuration.CmdCollection(WebF.Common.Configuration.CmdCollection)*

Parameters

value,

Constructor:

- *Common.Configuration.CmdCollection(WebF.Common.Configuration.CommandType[])*

Parameters

value,

- *SingleDS*

Return Value

,

- *CollectionDs*

Return Value

,

- *Add(WebF.Common.Configuration.CommandType)*

Parameters

value,

Return Value

,

- ***AddRange(WebF.Common.Configuration.CommandType[])***

Parameters

value,

- ***AddRange(WebF.Common.Configuration.CmdCollection)***

Parameters

value,

- ***Contains(WebF.Common.Configuration.CommandType)***

Parameters

value,

Return Value

,

- ***CopyTo(WebF.Common.Configuration.CommandType[],System.Int32)***

Parameters

array, index,

- ***IndexOf(WebF.Common.Configuration.CommandType)***

Parameters

value,

Return Value

,

- ***Insert(System.Int32,WebF.Common.Configuration.CommandType)***

Parameters

index, value,

- ***GetEnumerator***

Return Value

,

- ***Remove(System.String)***

Parameters

dsName,

- *Remove(WebF.Common.Configuration.CommandType)*

Parameters

value,

Common.Configuration.CmdCollection.DSEnumerator

WebF.Common.DBLayer

Common.DBLayer.clsDBLayer

Summary description for clsDBLayer. This class is contain methods to get connection string from web.config, to open and close connection to execute Sql statement and Store Procedure with overloaded methods and to PrepareXML From RecordSet.

Methods

- *open(System.String)*

This function will open connection with Specified DataSource.

Parameters

datasource,

- *close*

This function will close connection with Datasource.

- *GetConnectionString(System.String)*

If dataSource is "", then get default Connection String from web.config, else get string associated with that dataSource. Note that web.config will contain many datasources and associated connection strings.

Parameters

dataSource,

Return Value

,

- *Execute(System.String)*

Parameters

payload,

Return Value

,

- *Execute(System.String, System.String)*

Parameters

payload, datasource,

Return Value

,

- *PrepareXMLFromRecordSet(System.Data.OleDb.OleDbDataReader)*

Construct XML From recordset and return it to the calling function.

Parameters

sqlDR,

Return Value

,

WebF.Common.Encryption

Common.Encryption.Rijndael.clsRijndael

Summary description for common.

Methods

Constructor:

- *Common.Encryption.Rijndael.clsRijndael*
- *Encrypt(System.Byte[], System.Byte[], System.Byte[])*

Encrypt a byte array into a byte array using a key and an IV

Parameters

clearData, Key, IV,

Return Value

,

- *Encrypt(System.String, System.String)*

Encrypt a string into a string using a password Uses Encrypt(byte[], byte[], byte[])

Parameters

clearText, vEncStr,

Return Value

,

- ***Encrypt(System.Byte[],System.String)***

Encrypt bytes into bytes using a password Uses Encrypt(byte[], byte[], byte[])

Parameters

clearData, Password,

Return Value

,

- ***Encrypt(System.String,System.String,System.String)***

Encrypt a file into another file using a password

Parameters

fileIn, fileOut, Password,

- ***Decrypt(System.Byte[],System.Byte[],System.Byte[])***

Decrypt a byte array into a byte array using a key and an IV

Parameters

cipherData, Key, IV,

Return Value

,

- ***Decrypt(System.String,System.String)***

Decrypt a string into a string using a password Uses Decrypt(byte[], byte[], byte[])

Parameters

cipherText, vEncStr,

Return Value

,

- ***Decrypt(System.String,System.String,System.String)***

Parameters

fileIn, fileOut, Password,

- ***EncryptString(System.String,System.String)***

Parameters

vStr, vEncStr,

Return Value

,

- *DecryptString(System.String, System.String)*

Parameters

vStr, vEncStr,

Return Value

,

Common.Encryption.clsbase64.clsbase64

Summary description for common.

Methods

Constructor:

- *Common.Encryption.clsbase64.clsbase64*
- *Decrypt(System.String, System.String)*

Parameters

stringToDecrypt, sEncryptionKey,

Return Value

,

- *Encrypt(System.String, System.String)*

Parameters

stringToEncrypt, SEncryptionKey,

Return Value

,

Common.Encryption.clsProprietary.clsProprietary

Methods

Constructor:

- *Common.Encryption.clsProprietary.clsProprietary*

- *Encrypt(System.String)*

Parameters

strToEnc,

Return Value

,

- *Decrypt(System.String)*

Parameters

strToDec,

Return Value

,

Common.Encryption.md5.clsmd5

Summary description for Class1.

Methods

Constructor:

- *Common.Encryption.md5.clsmd5*
- *md5(System.String)*

Parameters

encrypt,

Return Value

,

WebF.Common.ExceptionHandler

WebF.Common.Logger

Common.Logger.clsLogger

Summary description for clsLogger.

Methods

- *LogMessage(System.String, System.String, System.String, System.String)*

This method will read the type of logging features switched on in the web.config file. Logging features include: [a] file [b] Event Viewer. Web.Config will also hold a parameter for the MessageLevel in the format EWID. An * will be used to represent the level for which logging is not required. E.g. in production, we could have EW*.Based on the features turned on, this method will log the messages based on current message level.Current Time will also be stored. The location/path of the log file will be read from web.config.

Parameters

sourceObject, messageLevel, messageCode, messageText,

Return Value

,

WebF.Common.Messaging

Common.Messaging.clsEmail

Summary description for clsEmail.

Methods

- *SendMail(System.String, System.String, System.String, System.String)*

Parameters

vTo, vFrom, vSubject, vBody,

Return Value

,

WebF.Common.Security

Common.Security.clsApplicationSession

Summary description for clsApplicationSession.

Methods

- *UpdateSessionParms(System.String, System.String)*

Update the record in session table for sid and put strParms into SessionParms column

Parameters

sid, strParms,

- *GetSessionField(System.String)*

Get Field method return the Value of Specified Node of an XML String.

Parameters

vName,

Return Value

,

- ***AddSessionField(System.String, System.String)***

Parameters

vName, vValue,

Return Value

,

- ***ModifySessionField(System.String, System.String)***

Parameters

vName, vValue,

Return Value

,

- ***RemoveSessionField(System.String)***

Parameters

vdbParams, vName,

Return Value

,

Common.Security.clsUserSession

Summary description for clsUserSession.

Methods

•

CreateSession(System.String, System.String, System.String, System.String, System.String)

Parameters

vUserID, vRole, vSource, vTZ, vIpAddr,

Return Value

,

- *ValidateSession(System.String)*

This function validates Session ID.

Parameters

vSID,

Return Value

,

WebF.Common.XMLProcessor

Common.XMLProcessor.clsXMLProcessor

Summary description for Class1.

Methods

- *ParseReturnCode(System.String)*

This method will accept an XML string and return the Return Code to the client.

Parameters

strXML,

Return Value

,

- *ParseReturnMessage(System.String)*

This method will accept an XML string and return the Return Message to the client.

Parameters

strXML,

Return Value

,

- *ReturnXMLNodeValue(System.String, System.String)*

This function will return value of a XML Node.

Parameters

dataXml, XMLNodeName,

Return Value

,

- *GetTag(System.String, System.String)*

Parameters

strXML, vTagName,

Return Value

,

- *UpdateTagValue(System.String, System.String, System.String)*

Parameters

strXML, vTagName, vTagValue,

Return Value

,

- *RemoveTag(System.String, System.String)*

Remove tag value from specified node.

Parameters

strXML, vTagName,

Return Value

,

- *AddTag(System.String, System.String, System.String)*

Add New Tag to XML.

Parameters

strXML, vTagName, vTagValue,

Return Value

,

WebF.Licensing

WebF.Mobile.TransactionBroker

Mobile.TransactionBroker.MobileTransactionManager

Summary description for Class1.

Methods

- *MobileTransactionProcessor(System.String)*

Parameters

mbRequestXMLValue,

Return Value

,

- *mbResEnc(System.String)*

Parameters

mbResXml,

Return Value

,

[WebF.Samples](#)

[Samples.clsWebfSample](#)

Summary description for clsWebfSample

Methods

- *getHelpFeature(System.String)*

Parameters

cmdType,

Return Value

,

- *listWebF_Sample_List(System.String, System.String, System.String, System.String)*

Parameters

_cp, _rp, _userid, _sessionid,

Return Value

,

- *retrievelistWebF_Sample_List(System.String, System.String)*

Parameters

_userid, _sessionid,

Return Value

,

•

addWebF_Sample_Add(System.String, System.String, System.String, System.String, System.String, System.String, System.String)

Parameters

_CategoryName, _Description, _Available, _Type, _mode, _userid, _sessionid,

Return Value

,

•

editWebF_Sample_Edit(System.String, System.String, System.String, System.String, System.String, System.String, System.String)

Parameters

_CategoryName, _Description, _Available, _Type, _mode, _userid, _sessionid,

Return Value

,

• ***listWebFActiveUsers(System.String, System.String)***

Parameters

_userid, _sessionid,

Return Value

,

• ***listWebF_TZ(System.String, System.String)***

Parameters

_userid, _sessionid,

Return Value

,

• ***retrievelistWebF_TZ(System.String, System.String)***

Parameters

_userid, _sessionid,

Return Value

,

Parameters

_cp, _rp, _userid, _sessionid,

Return Value

,

•

editWebF_Help_Manager_Edit(System.String, System.String, System.String, System.String, System.String, System.String, System.String)

Parameters

_FeatureName, _FeatureSummary, _FeatureDescription, _mode, _userid, _sessionid,

Return Value

,

WebF.UI.BusinessManager

UI.BusinessManager.clsBusinessManager

Methods

•

Webf_Web_BusinessTransactionManager(System.String, System.Web.HttpRequest)

Business Transaction Manager for Web

Parameters

commandType, Request,

Return Value

,

•

Webf_WebService_BusinessTransactionManager(System.String, System.String)

Business Transaction Manager for Webservice

Parameters

commandType, Request,

Return Value

,

- *Webf_Mobile_BusinessTransactionManager(System.String, System.String)*

Business Transaction Manager for Mobile

Parameters

commandType, mbRequestXmlPayload,

Return Value

,

UI.BusinessManager.clsAuthentication

Summary description for authentication.

Methods

- *ValidateSignOn(System.String, System.String, System.String, System.String)*

Parameters

source, userId, password, ipAddr,

Return Value

,

- *Webf_ExtendedCommandTypeCheck(System.String)*

This method check Extended Command Type. This method will return true or false. For commandType which required limited access to features return false for that commandType else return true.

Parameters

_cmdType,

Return Value

,

WebF.UI.GenericBusinessMethods

UI.GenericBusinessMethods.clsGenericBusinessMethods

Summary description for Class1.

Methods

- *GenericAccessMethod(System.String)*

Parameters

commandType,

Return Value

,

[WebF.UI.MenuBuilder](#)

[UI.MenuBuilder.clsMenuBuilder](#)

Summary description for Class1.

Methods

- *BuildMenu(System.String)*

Parameters

qs,

Return Value

,

[WebF.UI.QueryString](#)

[UI.QueryString.clsQueryString](#)

Summary description for QueryString.

Methods

- *EncryptQS(System.String)*

Method to do Encryption of Query String.

Parameters

vQS,

Return Value

,

- *DecryptQS(System.String)*

Method to Decryption of Query String.

Parameters

vQS,

Return Value

,

- *GetField(System.String)*

Get Field method return the Value of Specified Node of an XML String.

Parameters

vName,

Return Value

,

- *AddField(System.String, System.String)*

Parameters

vName, vValue,

Return Value

,

- *ModifyField(System.String, System.String)*

Parameters

vName, vValue,

Return Value

,

- *RemoveField(System.String)*

Parameters

vName,

Return Value

,

WebF.UI.TransactionBroker

UI.TransactionBroker.TransactionManager

Summary description for TransactionManager.

Methods

-

- *TransactionProcessor(System.Web.HttpRequest, System.Web.HttpResponse)*

This method check command Type and according to that it will call Security class.

Parameters

Request, Response,

Return Value

,

- ***Stream2Browser(System.String, System.String)***

Parameters

vHTML, callType,

Return Value

,

- ***CheckErrors(System.String)***

Method to check Error Code.

Parameters

XML,

Return Value

,

WebF.UI.XSLTransform

UI.XSLTransform.clsXSLTransform

Methods

- ***Encoding***

Return Value

,

- ***XMLHeader***

Return Value

,

- ***TransformXMLDataUsingViewID(System.String, System.String)***

Parameters

viewId, dataXML,

Return Value

,

- *TransformXMLFileUsingViewID(System.String, System.String)*

Parameters

viewId, xmlPath,

Return Value

,

- *TransformXMLDataUsingXSL(System.String, System.String)*

Parameters

xslPath, dataXML,

Return Value

,

- *TransformXMLFileUsingXSL(System.String, System.String)*

Parameters

xslPath, xmlPath,

Return Value

,

- *applicationPath*

Return Value

,

WebF.WebService.TransactionBroker

WebService.TransactionBroker.WebServiceTransactionBroker

Summary description for WebF.WebService.TransactionBroker.

Methods

- *WebServiceTransactionProcessor(System.String)*

Parameters

wsRequestXMLValue,

Return Value

,

• *wsResEnc(System.String, System.String)*

Parameters

wsResXml,

Return Value

,

- **editadsEditAffiliates(System.String, System.String, System.String, System.String, System.String, System.String, System.String, System.String, System.String, System.String, System.String, System.String, System.String, System.String, System.String, System.String, System.String, System.String, System.String, System.String)**

Parameters

_Company, _UserName, _Password, _Email, _HomePage, _IsActive, _Name, _TaxID, _Phone, _Address, _ClickThruPage, _Country, _City, _State, _Zip, _Fax, _Approved, _mode, _userid, _sessionid, _UserCode,

Return Value

,

- **retrieveAdvertiser(System.String, System.String, System.String)**

Parameters

_userid, _sessionid, _limitData,

Return Value

,

- **retrieveAffiliates(System.String, System.String, System.String)**

Parameters

_userid, _sessionid, _limitData,

Return Value

,

- **addAdsAddAffPstSale(System.String, System.String, System.String, System.String, System.String, System.String, System.String, System.String, System.String, System.String, System.String, System.String)**

Parameters

_AffiliateUserCode, _BannerCode, _PayTypeCode, _SaleValue, _ReferenceNumber, _CountryOfSale, _CommisionValue, _SaleStatus, _mode, _userid, _sessionid,

Return Value

,

- **listAdsManageBanner(System.String,System.String)**

Parameters

_userid, _sessionid,

Return Value

,

- **retrievelistAdsManageBanner(System.String,System.String)**

Parameters

_userid, _sessionid,

Return Value

,

- **retrievelistAdsManageBanner(System.String,System.String,System.String)**

Parameters

_userid, _sessionid, _limit,

Return Value

,

- **listadsManagePublisher(System.String,System.String,System.String, System.String,System.String,System.String,System.String)**

Parameters

_cp, _rp, _userid, _sessionid, _searchOpt, _searchText, _mode,

Return Value

,

- **retrievelistadsManagePublisher(System.String,System.String)**

Parameters

_userid, _sessionid,

Return Value

,

- **editadsEditPublisher(System.String,System.String,System.String,Sys**

tem.String,System.String,System.String,System.String,System.String,
System.String,System.String,System.String,System.String,System.Str
ing,System.String,System.String,System.String,System.String,System
.String,System.String,System.String,System.String,System.String,Sys
tem.String,System.String,System.String,System.String,System.String
)

Parameters

_UserName, _Password, _Email, _HomePage, _Name, _CompanyName, _Phone,
_Address, _Country, _City, _State, _Zip, _Fax, _CreditCardNo, _Summary,
_Details, _CreditCardType, _Active, _TZ, _LangPref, _mode, _userid,
_GatewayCode, _Expiry, _data, _queryData, _sessionid,

Return Value

,



editadsEditPublisherUN(System.String,System.String,System.String,
System.String,System.String,System.String,System.String,System.Str
ing,System.String,System.String,System.String,System.String,System
.String,System.String,System.String,System.String,System.String,Sys
tem.String,System.String,System.String,System.String,System.String,
System.String,System.String,System.String)

Parameters

_UserName, _Password, _Email, _HomePage, _Name, _CompanyName, _Phone,
_Address, _Country, _City, _State, _Zip, _Fax, _CreditCardNo, _Summary,
_Details, _CreditCardType, _Active, _TZ, _LangPref, _mode, _userid,
_GatewayCode, _Expiry, _sessionid,

Return Value

,



addadsNewPublisher(System.String,System.String,System.String,Sys
tem.String,System.String,System.String,System.String,System.String,
System.String,System.String,System.String,System.String,System.Str
ing,System.String,System.String,System.String,System.String,System
.String,System.String,System.String,System.String,System.String,Sys
tem.String,System.String,System.String,System.String)

Parameters

_UserName, _Password, _Email, _HomePage, _Name, _CompanyName, _Phone,
_Address, _Country, _City, _State, _Zip, _Fax, _CreditCardNo, _Summary,
_Details, _CreditCardType, _Active, _TZ, _LangPref, _mode, _userid,
_GatewayCode, _Expiry, _sessionid, _uc,

Return Value

,

•

editAdsEditNaProfile(System.String, System.String, System.String, System.String, System.String, System.String, System.String, System.String, System.String, System.String, System.String, System.String, System.String, System.String, System.String)

Parameters

_Password, _Email, _HomePage, _Name, _CompanyName, _Phone, _Address, _Country, _City, _State, _Zip, _Fax, _mode, _userid, _GatewayCode, _sessionid,

Return Value

,

• **listTempOrder(System.String, System.String)**

Parameters

_userid, _sessionid,

Return Value

,

• **listTempPayment(System.String, System.String)**

Parameters

_userid, _sessionid,

Return Value

,

• **AdsDelete(System.String, System.String, System.String)**

Parameters

_delWhat, _Code, _mode,

Return Value

,

•

editAdsGWPreference(System.String, System.String, System.String, System.String, System.String, System.String)

Parameters

_GatewayCode, _LoginId, _GwPwd, _TxnKey, _mode, _userid, _sessionid,

- **editAdsEditFee(System.String, System.String, System.String, System.String, System.String)**

Parameters

_PublisherFee, _FeeTerm, _mode, _userid, _sessionid,

Return Value

,

- **listAdsManageReseller(System.String, System.String, System.String, System.String, System.String, System.String, System.String, System.String, System.String, System.String)**

Parameters

_userid, _sessionid, _modeForm, _modeQS, _usercode, _CompanyName, _UserName, _Password, _Email, _Name, _Phone, _Address,

Return Value

,

- **addAdsNewResellerType(System.String, System.String, System.String, System.String)**

Parameters

_ResellerType, _mode, _userid, _sessionid,

Return Value

,

- **listAdsManageResellerType(System.String, System.String)**

Parameters

_userid, _sessionid,

Return Value

,

- **editAdsEditResellerType(System.String, System.String, System.String, System.String)**

Parameters

_ResellerType, _mode, _userid, _sessionid,

Return Value

,

•

advertiseOnNetwork(System.String, System.String, System.String, System.String, System.String, System.String, System.String, System.String)

Parameters

_PType, _BidAmout, _DailyBudget, _BannerCode, _mode, _userid, _sessionid,

Return Value

,

•

retrievelistAdsUnListPub(System.String, System.String, System.String)

Parameters

_userid, _sessionid, _AdCatCode,

Return Value

,

•

addAdsNetworkBidUn(System.String, System.String, System.String, System.String)

Parameters

_BannerName, _mode, _userid, _sessionid,

Return Value

,

NET.OnlineAdvertising.clsPlacements

Summary description for clsPlacements

Methods

Constructor:

- **NET.OnlineAdvertising.clsPlacements**

- **addadsNewRegion(System.String, System.String, System.String, System.String, System.String, System.String, System.String)**

Parameters

_RegionType, _Name, _Comments, _mode, _userid, _sessionid,

Return Value

,

- **listadsManageZones(System.String, System.String)**

Parameters

_userid, _sessionid,

Return Value

,

- **addadsNewZone(System.String, System.String, System.String, System.String, System.String, System.String, System.String)**

Parameters

_Name, _Width, _Height, _mode, _userid, _sessionid,

Return Value

,

- **editadsEditRegion(System.String, System.String, System.String, System.String, System.String, System.String, System.String)**

Parameters

_Name, _Comments, _mode, _RegionType, _userid, _sessionid,

Return Value

,

- **editadsEditZone(System.String, System.String, System.String, System.String, System.String, System.String)**

Parameters

_Name, _Width, _Height, _mode, _userid, _sessionid,

Return Value

,

- **retrievelistadsBannerType**

Return Value

,

- **retrievelistadsManageZones(System.String, System.String, System.String)**

Parameters

_userid, _sessionid, _limitData,

Return Value

,

- **retrievelistadsManageZonesUN(System.String, System.String, System.String, System.String)**

Parameters

_userid, _sessionid, _limitData, _Role,

Return Value

,

- **listadsManageRegion(System.String, System.String)**

Parameters

_userid, _sessionid,

Return Value

,

- **retrieveRegions(System.String, System.String, System.String)**

Parameters

_userid, _sessionid, _limitData,

Return Value

,

- **retrieveRegionsUn(System.String, System.String, System.String, System.String)**

Parameters

_userid, _sessionid, _limitData, _Role,

Return Value

,

- **listadsManagePricing(System.String, System.String)**

Parameters

_userid, _sessionid,

Return Value

,

- **retrievelistadsManagePricing(System.String, System.String)**

Parameters

_userid, _sessionid,

Return Value

,

NET.OnlineAdvertising.clsAds

Summary description for clsAds

Methods

Constructor:

- **NET.OnlineAdvertising.clsAds**
- **listadsAffCodes(System.String, System.String, System.String)**

Parameters

_bannercode, _userid, _sessionid,

Return Value

,

- **editBannerTargeting(System.String, System.String, System.String, System.String, System.String, System.String, System.String)**

Parameters

_BannerCode, _DataKey, _Category, _mode, _userid, _sessionid,

Return Value

,

- **retrievelistListCategories(System.String, System.String)**

Parameters

_userid, _sessionid,

Return Value

,

NET.OnlineAdvertising.clsCampaigns

Summary description for clsCampaigns

Methods

Constructor:

- **NET.OnlineAdvertising.clsCampaigns**

- **listadsManageCamaigns(System.String,System.String,System.String)**

Parameters

_userid, _sessionid, _status,

Return Value

,

- **retrievelistadsManageCamaigns(System.String,System.String,System.String)**

Parameters

_userid, _sessionid, _dataLimit,

Return Value

,

- **addadsNewCamaigns(System.String,System.String)**

Parameters

_Name, _IsDefault, _StartDate, _EndDate, _ShowDays, _CampType, _MaxImpressions, _MaxClickThrus, _ImpPerDay, _StartHour, _EndHour, _Keywords, _EmailReports, _LastSentReport, _ShowBrowser, _ShowOS, _ShowCountry, _IncludeIP, _ExcludeIP, _mode, _userid, _sessionid, _userCode, _bannerCode, _regionCode, _OrderNo, _display, _MobileTargetting, _Channels, _PType, _BidAmt, _DBudget, _OType,

Return Value

,

Methods

Constructor:

- **NET.OnlineAdvertising.clsStatistics**

- **listAdsStatisticsAdvertiser(System.String, System.String, System.String, System.String, System.String, System.String, System.String, System.String, System.String, System.String)**

Parameters

_Advertiser, _StartDate, _EndDate, _Duration, _GroupLevel1, _GroupLevel2, _UniqueType, _mode, _userid, _sessionid, _QType, _FType,

Return Value

,

- **GetAccountStats(System.String)**

Parameters

_usercode,

Return Value

,

- **addadsPublisherTraffic(System.String, System.String, System.String, System.String, System.String, System.String, System.String)**

Parameters

_UserCode, _StartMonth, _StartYear, _EndMonth, _EndYear, _mode, _userid, _sessionid,

Return Value

,

- **listAdsStatisticsExchange(System.String, System.String, System.String, System.String, System.String)**

Parameters

_UserCode, _StartDate, _EndDate, _mode, _userid, _sessionid, _Role,

Return Value

,

- **listAdsStatisticsAffiliate(System.String, System.String, System.String, System.String, System.String, System.String, System.String, System.String)**

Parameters

_Advertiser, _StartDate, _EndDate, _GroupLevel1, _GroupLevel2, _UniqueType, _mode, _userid, _sessionid,

Return Value

,

- **addAdsResellerReport(System.String, System.String, System.String, System.String, System.String, System.String)**

Parameters

_Rep, _School, _Student, _Advertiser, _mode, _userid, _sessionid,

Return Value

,

- **retrievelistadsManageRep(System.String, System.String)**

Parameters

_userid, _sessionid,

Return Value

,

- **retrievelistadsManageSchool(System.String, System.String, System.String)**

Parameters

_userid, _sessionid, _Rep,

Return Value

,

- **retrievelistadsManageStudent(System.String, System.String, System.String)**

Parameters

_userid, _sessionid, _School,

Return Value

,

- **retrievelistadsManageAdvertiser(System.String, System.String, System.String)**

Parameters

_userid, _sessionid, _Student,

Return Value

,

- **listAdsListEarnings(System.String, System.String, System.String, System.String, System.String)**

Parameters

_mode, _userid, _StartDate, _EndDate, _sessionid,

Return Value

,

NET.OnlineAdvertising.clsLogs

Summary description for clsLogs

NET.OnlineAdvertising.clsBilling

Summary description for clsBilling

Methods

Constructor:

- **NET.OnlineAdvertising.clsBilling**

-

addAdsPayment(System.String, System.String, System.String, System.

- **listadsBillingHistory(System.String, System.String, System.String, System.String, System.String, System.String, System.String, System.String, System.String)**

Parameters

_advertiserid, _mode, _userID, _sessionID, _display, _Role, _StartDate, _EndDate, _status,

Return Value

,

- **listAdsAffiliateSalesLog(System.String, System.String, System.String, System.String, System.String, System.String, System.String)**

Parameters

_userid, _sessionid, _StartDate, _EndDate, _Display, _PayType, _Status,

Return Value

,

- **listadsAffiliateHistory(System.String, System.String, System.String, System.String, System.String, System.String, System.String, System.String)**

Parameters

_affiliateid, _mode, _userID, _sessionID, _StartDate, _EndDate, _Display, _PayType, _Status, _Role,

Return Value

,

- **addAdsNewAdvPayment(System.String, System.String, System.String, System.String, System.String, System.String, System.String)**

Parameters

_AdvertiserID, _OrderID, _ReceiptID, _PaymentAmount, _PaymentType, _mode, _Role, _userid, _sessionid,

Return Value

,

- **addAdsNewAffPayment(System.String, System.String, System.String, System.String, System.String, System.String, System.String)**

Parameters

_AffiliateID, _OrderID, _ReceiptID, _PaymentAmount, _PaymentType, _mode, _userid, _sessionid,

Return Value

,

- **addadsAssignCredits(System.String, System.String, System.String, System.String, System.String)**

Parameters

_UserCode, _TotalCredits, _mode, _userid, _sessionid,

Return Value

,

- **addadsTransferCredits(System.String, System.String, System.String, System.String, System.String)**

Parameters

_UserCode, _UserCodeTo, _TotalCredits, _mode, _userid, _sessionid,

Return Value

,

- **listadsNetAdminHistory(System.String, System.String, System.String, System.String, System.String, System.String)**

Parameters

_publisherid, _mode, _userID, _sessionID, _StartDate, _EndDate,

Return Value

,

- **editAds_Hosting_Plans(System.String, System.String, System.String, System.String, System.String, System.String, System.String)**

ng, System.String, System.String, System.String, System.String, System.String, System.String, System.String)

Parameters

_Tier1Imps, _Tier1Price, _Tier2Imps, _Tier2Price, _Tier3Imps, _Tier3Price, _Tier4Imps, _Tier4Price, _Tier5Imps, _Tier5Price, _mode, _userid, _sessionid, _display, _Display,

Return Value

,

- **listAdsMsorder(System.String, System.String, System.String)**

Parameters

_userid, _sessionid, _MasterOrderID,

Return Value

,

- **retrievelistAdsMsorder(System.String, System.String)**

Parameters

_userid, _sessionid,

Return Value

,

- **addAdsInvoice(System.String, System.String, System.String, System.String)**

Parameters

_mode, _userid, _sessionid, _MoId,

Return Value

,

- **listAdsApproveSales(System.String, System.String, System.String, System.String)**

Parameters

_userid, _sessionid, _status, _ID,

Return Value

,

- **editAdsEditApprove(System.String, System.String, System.String, System.String, System.String, System.String, System.String, System.String, System.String, System.String)**

Parameters

_BannerCode, _PayTypeCode, _SaleValue, _ReferenceNumber, _CountryOfSale, _CommisionValue, _SaleStatus, _mode, _userid, _sessionid,

Return Value

,

- **editAdsRebid(System.String, System.String, System.String, System.String, System.String)**

Parameters

_MaxBidAmount, _DailyBudget, _mode, _userid, _sessionid,

Return Value

,

- **addAdsCreditAccount(System.String, System.String, System.String, System.String, System.String)**

Parameters

_PaymentAmount, _mode, _userid, _UserCode, _sessionid,

Return Value

,

- **addAdsPaymentUN(System.String, System.String, System.String, System.String, System.String, System.String, System.String, System.String, System.String, System.String, System.String, System.String)**

Parameters

_PayType, _CardType, _Name, _Address, _CardNumber, _Expiry, _CCV2, _mode, _userID, _UserCode, _Role, _sessionID, _Status, _OrderCode, _FinalPrice, _Modules,

Return Value

,

NET.OnlineAdvertising.clsReference

Summary description for clsReference

Methods

Constructor:

- **NET.OnlineAdvertising.clsReference**

-

listadsManageAffiliateCategories(System.String, System.String, System.String, System.String)

Parameters

_cp, _rp, _userid, _sessionid,

Return Value

,

-

addadsNewAffiliateCategories(System.String, System.String, System.String, System.String)

Parameters

_CategoryName, _mode, _userid, _sessionid,

Return Value

,

-

listadsManagePaytypes(System.String, System.String, System.String, System.String)

Parameters

_cp, _rp, _userid, _sessionid,

Return Value

,

-

addadsAddPaytypes(System.String, System.String, System.String, System.String, System.String)

Parameters

_PayType, _PayTypeOnScreen, _mode, _userid, _sessionid,

Return Value

,

- **editadsEditPaytypes(System.String, System.String, System.String, System.String, System.String, System.String, System.String)**

Parameters

_PayType, _PayTypeOnScreen, _mode, _userid, _sessionid, _PaytypeCode,

Return Value

,

- **editadsEditAffiliateCategories(System.String, System.String, System.String, System.String)**

Parameters

_CategoryName, _mode, _userid, _sessionid,

Return Value

,

- **editadsEditAdCategories(System.String, System.String, System.String, System.String, System.String, System.String)**

Parameters

_AdCategoryName, _Active, _mode, _userid, _sessionid,

Return Value

,

- **addadsNewAdCategories(System.String, System.String, System.String, System.String, System.String, System.String, System.String)**

Parameters

_AdCategoryName, _Active, _mode, _Role, _userid, _sessionid,

Return Value

,

- **listadsManageAdCategories(System.String, System.String, System.String, System.String, System.String)**

Parameters

_cp, _rp, _Role, _userid, _sessionid,

Return Value

,

- **retrievelistadsManageAdCategories(System.String, System.String, System.String)**

Parameters

_userid, _sessionid, _Display,

Return Value

,

- **retrievePaytypes(System.String, System.String)**

Parameters

_userid, _sessionid,

Return Value

,

- **retrievePubPaytypes(System.String, System.String)**

Parameters

_userid, _sessionid,

Return Value

,

- **editadsEditPreference(System.String, System.String, System.String, System.String, System.String, System.String, System.String, System.String, System.String, System.String)**

Parameters

_NotifySale, _CookieLife, _SignUpThanks, _MassMailLetter, _AffiliateLetter, _AutoSalesApproval, _AutoAffiliateApproval, _AffiliateApprovalLetter, _mode, _userid, _sessionid,

Return Value

,

- **listAdsLang(System.String, System.String)**

Parameters

_userid, _sessionid,

Return Value

,

- **retrievelistAdsLang(System.String, System.String)**

Parameters

_userid, _sessionid,

Return Value

,

- **listMyPubChannels(System.String, System.String, System.String, System.String)**

Parameters

_CategoryID, _mode, _userid, _sessionid,

Return Value

,

- **listMyExchangeChannels(System.String, System.String, System.String, System.String, System.String)**

Parameters

_userid, _sessionid,

Return Value

,

- **listadsEditChannel(System.String, System.String, System.String, System.String)**

Parameters

_CategoryID, _mode, _userid, _sessionid,

Return Value

,

- **listaffEditChannel(System.String, System.String, System.String, System.String)**

Parameters

_CategoryID, _mode, _userid, _sessionid,

Return Value

,

- **editAds_Xchange_Pref(System.String, System.String, System.String, System.String, System.String)**

Parameters

_CreditsPerImp, _SignUpCredits, _mode, _userid, _sessionid,

Return Value

,

- **total(System.String, System.String)**

Parameters

_userid, _sessionid,

Return Value

,

- **listAdsListGateway(System.String, System.String)**

Parameters

_userid, _sessionid,

Return Value

,

- **retrievelistAdsListGateway(System.String, System.String, System.String)**

Parameters

_userid, _sessionid, _dispay,

Return Value

,

- **PersonalizedValue(System.String)**

Parameters

_userCode,

Return Value

,

- **editAdsNaPref(System.String, System.String, System.String, System.String, System.String, System.String, System.String, System.String, System.String)**

Parameters

_Commission, _Exchange, _Bonus, _Image, _mode, _userid, _sessionid, _QRole, _hidRole,

Return Value

,

- **addAdsNewChannel(System.String, System.String, System.String, System.String, System.String, System.String)**

Parameters

_AdCategoryName, _Active, _mode, _userid, _sessionid,

Return Value

,

Parameters

_AdCategory, _BannerName, _ZoneCode, _BannerType, _ImageURL, _AppletType, _fileArc, _loop, _control, _ImgURL, _HtmlAd, _ImgLink, _ImgWidth, _ImgHeight, _ImgBorder, _ImgTarget, _ImgUnderText, _ImgTextLink, _ImgWeight, _mode, _userid, _sessionid, _Campaign, _BannerCode, _Display, _UserCode, _TextLink, _Role, _BannerSource,

Return Value

,

•

listadsManageAffiliates(System.String, System.String, System.String, System.String)

Parameters

_cp, _rp, _userid, _sessionid,

Return Value

,

•

addadsNewAffiliate(System.String, System.String, System.String, System.String, System.String, System.String, System.String, System.String, System.String, System.String, System.String, System.String, System.String, System.String, System.String, System.String)

Parameters

_Company, _UserName, _Password, _Email, _HomePage, _IsActive, _Name, _TaxID, _Phone, _Address, _ClickThruPage, _Country, _City, _State, _Zip, _Fax, _Approved, _mode, _userid, _sessionid, _uc,

Return Value

,

•

editadsEditAffiliates(System.String, System.String, System.String, System.String, System.String, System.String, System.String, System.String, System.String, System.String, System.String, System.String, System.String, System.String, System.String, System.String)

Parameters

_Company, _UserName, _Password, _Email, _HomePage, _IsActive, _Name, _TaxID, _Phone, _Address, _ClickThruPage, _Country, _City, _State, _Zip, _Fax, _Approved, _mode, _userid, _sessionid, _UserCode,

Return Value

,

- *retrieveAdvertiser(System.String, System.String, System.String)*

Parameters

_userid, _sessionid, _limitData,

Return Value

,

- *retrieveAffiliates(System.String, System.String, System.String)*

Parameters

_userid, _sessionid, _limitData,

Return Value

,

- *addAdsAddAffPstSale(System.String, System.String, System.String, System.String, System.String, System.String, System.String, System.String, System.String, System.String)*

Parameters

_AffiliateUserCode, _BannerCode, _PayTypeCode, _SaleValue, _ReferenceNumber, _CountryOfSale, _CommisionValue, _SaleStatus, _mode, _userid, _sessionid,

Return Value

,

- *listAdsManageBanner(System.String, System.String)*

Parameters

_userid, _sessionid,

Return Value

,

- *retrievelistAdsManageBanner(System.String, System.String)*

Parameters

_userid, _sessionid,

Return Value

,

- *retrievelistAdsManageBanner(System.String, System.String, System.String)*

,

- *listTempPayment(System.String, System.String)*

Parameters

_userid, _sessionid,

Return Value

,

- *AdsDelete(System.String, System.String, System.String)*

Parameters

_delWhat, _Code, _mode,

Return Value

,

- *editAdsGWPreference(System.String, System.String, System.String, System.String, System.String, System.String, System.String, System.String)*

Parameters

_GatewayCode, _LoginId, _GwPwd, _TxnKey, _mode, _userid, _sessionid,

Return Value

,

- *addAdsUnNewPub(System.String, System.String, System.String, System.String, System.String, System.String, System.String, System.String, System.String, System.String, System.String, System.String, System.String, System.String, System.String, System.String, System.String, System.String, System.String, System.String)*

Parameters

_UserName, _Password, _Email, _HomePage, _IsActive, _Name, _CompanyName, _Phone, _Address, _Country, _City, _State, _Zip, _Fax, _CreditCardNo, _CreditCardType, _Expiry, _TZ, _LangPref, _GatewayCode, _WebsiteSummary, _WebsiteDetails, _mode, _userid,

Return Value

,

- *listAdsUnListPub(System.String, System.String, System.String, System.String, System.String, System.String, System.String, System.String)*

Parameters

_cp, _rp, _userid, _sessionid, _mode, _AdCode, _uc,

Return Value

,

•

listListCategories(System.String, System.String, System.String, System.String)

Parameters

_cp, _rp, _userid, _sessionid,

Return Value

,

•

editAdsEditFee(System.String, System.String, System.String, System.String, System.String)

Parameters

_PublisherFee, _FeeTerm, _mode, _userid, _sessionid,

Return Value

,

•

listAdsManageReseller(System.String, System.String, System.String, System.String, System.String, System.String, System.String, System.String, System.String, System.String)

Parameters

_userid, _sessionid, _modeForm, _modeQS, _usercode, _CompanyName, _UserName, _Password, _Email, _Name, _Phone, _Address,

Return Value

,

•

addAdsNewResellerType(System.String, System.String, System.String, System.String)

Parameters

_ResellerType, _mode, _userid, _sessionid,

Return Value

,

- *listAdsManageResellerType(System.String, System.String)*

Parameters

_userid, _sessionid,

Return Value

,

- *editAdsEditResellerType(System.String, System.String, System.String, System.String)*

Parameters

_ResellerType, _mode, _userid, _sessionid,

Return Value

,

- *advertiseOnNetwork(System.String, System.String, System.String, System.String, System.String, System.String, System.String)*

Parameters

_PType, _BidAmout, _DailyBudget, _BannerCode, _mode, _userid, _sessionid,

Return Value

,

- *retrievelistAdsUnListPub(System.String, System.String, System.String)*

Parameters

_userid, _sessionid, _AdCatCode,

Return Value

,

- *addAdsNetworkBidUn(System.String, System.String, System.String, System.String)*

Parameters

_BannerName, _mode, _userid, _sessionid,

Return Value

,

NET.OnlineAdvertising.clsPlacements

Summary description for clsPlacements

Methods

Constructor:

- *NET.OnlineAdvertising.clsPlacements*

-

addadsNewRegion(System.String, System.String, System.String, System.String, System.String, System.String)

Parameters

_RegionType, _Name, _Comments, _mode, _userid, _sessionid,

Return Value

,

- *listadsManageZones(System.String, System.String)*

Parameters

_userid, _sessionid,

Return Value

,

-

addadsNewZone(System.String, System.String, System.String, System.String, System.String, System.String)

Parameters

_Name, _Width, _Height, _mode, _userid, _sessionid,

Return Value

,

-

editadsEditRegion(System.String, System.String, System.String, System.String, System.String, System.String)

Parameters

_Name, _Comments, _mode, _RegionType, _userid, _sessionid,

Return Value

,

- *editadsEditZone(System.String, System.String, System.String, System.String, System.String, System.String)*

Parameters

_Name, _Width, _Height, _mode, _userid, _sessionid,

Return Value

,

- *retrievelistadsBannerType*

Return Value

,

- *retrievelistadsManageZones(System.String, System.String, System.String)*

Parameters

_userid, _sessionid, _limitData,

Return Value

,

- *retrievelistadsManageZonesUN(System.String, System.String, System.String, System.String)*

Parameters

_userid, _sessionid, _limitData, _Role,

Return Value

,

- *listadsManageRegion(System.String, System.String)*

Parameters

_userid, _sessionid,

Return Value

,

- *retrieveRegions(System.String, System.String, System.String)*

Parameters

_userid, _sessionid, _limitData,

Return Value

,

Parameters

_Advertiser, _StartDate, _EndDate, _Duration, _GroupLevel1, _GroupLevel2, _UniqueType, _mode, _userid, _sessionid, _QType, _FType,

Return Value

,

- ***GetAccountStats(System.String)***

Parameters

_usercode,

Return Value

,

- ***addadsPublisherTraffic(System.String, System.String, System.String, System.String, System.String, System.String, System.String, System.String, System.String)***

Parameters

_UserCode, _StartMonth, _StartYear, _EndMonth, _EndYear, _mode, _userid, _sessionid,

Return Value

,

- ***listAdsStatisticsExchange(System.String, System.String, System.String, System.String, System.String, System.String, System.String, System.String)***

Parameters

_UserCode, _StartDate, _EndDate, _mode, _userid, _sessionid, _Role,

Return Value

,

- ***listAdsStatisticsAffiliate(System.String, System.String, System.String, System.String, System.String, System.String, System.String, System.String)***
)

Parameters

_Advertiser, _StartDate, _EndDate, _GroupLevel1, _GroupLevel2, _UniqueType, _mode, _userid, _sessionid,

Return Value

,

- ***addAdsResellerReport(System.String, System.String, System.String, System.String, System.String, System.String, System.String, System.String)***

Parameters

_Rep, _School, _Student, _Advertiser, _mode, _userid, _sessionid,

Return Value

,

- ***retrievelistadsManageRep(System.String, System.String)***

Parameters

_userid, _sessionid,

Return Value

,

- ***retrievelistadsManageSchool(System.String, System.String, System.String)***

Parameters

_userid, _sessionid, _Rep,

Return Value

,

- ***retrievelistadsManageStudent(System.String, System.String, System.String)***

Parameters

_userid, _sessionid, _School,

Return Value

,

- ***retrievelistadsManageAdvertiser(System.String, System.String, System.String)***

Parameters

_userid, _sessionid, _Student,

Return Value

,

- ***listAdsListEarnings(System.String, System.String, System.String, System.String, System.String, System.String)***

Parameters

_mode, _userid, _StartDate, _EndDate, _sessionid,

Return Value

,

NET.OnlineAdvertising.clsLogs

Summary description for clsLogs

NET.OnlineAdvertising.clsBilling

Summary description for clsBilling

Methods

Constructor:

- *NET.OnlineAdvertising.clsBilling*

-

addAdsPayment(System.String, System.String, System.String, System.String, System.String, System.String, System.String, System.String, System.String, System.String, System.String, System.String, System.String)

Parameters

_PayType, _CardType, _Name, _Address, _CardNumber, _Expiry, _CCV2, _mode, _userID, _UserCode, _Role, _sessionID, _Status, _OrderCode, _FinalPrice,

Return Value

,

-

listadsTempOrder(System.String, System.String, System.String, System.String, System.String, System.String)

Parameters

_userid, _sessionid, _StartDate, _EndDate, _display, _MoId,

Return Value

,

-

listAdsTempPayment(System.String, System.String, System.String, System.String)

Parameters

_userid, _sessionid, _StartDate, _EndDate,

Return Value

,

•

listAdsTempPayment(System.String, System.String, System.String, System.String, System.String)

Parameters

_userid, _sessionid, _StartDate, _EndDate, _MOId,

Return Value

,

•

listadsBillingHistory(System.String, System.String, System.String, System.String, System.String, System.String, System.String)

Parameters

_advertiserid, _mode, _userID, _sessionID, _display, _Role, _StartDate, _EndDate, _status,

Return Value

,

•

listAdsAffiliateSalesLog(System.String, System.String, System.String, System.String, System.String, System.String, System.String)

Parameters

_userid, _sessionid, _StartDate, _EndDate, _Display, _PayType, _Status,

Return Value

,

•

listadsAffiliateHistory(System.String, System.String, System.String, System.String, System.String, System.String, System.String, System.String)

Parameters

_affiliateid, _mode, _userID, _sessionID, _StartDate, _EndDate, _Display, _PayType, _Status, _Role,

Return Value

,

- ***addAdsNewAdvPayment(System.String, System.String, System.String, System.String, System.String, System.String, System.String, System.String)***

Parameters

_AdvertiserID, _OrderID, _ReceiptID, _PaymentAmount, _PaymentType, _mode, _Role, _userid, _sessionid,

Return Value

,

- ***addAdsNewAffPayment(System.String, System.String, System.String, System.String, System.String, System.String, System.String)***

Parameters

_AffiliateID, _OrderID, _ReceiptID, _PaymentAmount, _PaymentType, _mode, _userid, _sessionid,

Return Value

,

- ***addadsAssignCredits(System.String, System.String, System.String, System.String, System.String)***

Parameters

_UserCode, _TotalCredits, _mode, _userid, _sessionid,

Return Value

,

- ***addadsTransferCredits(System.String, System.String, System.String, System.String, System.String, System.String)***

Parameters

_UserCode, _UserCodeTo, _TotalCredits, _mode, _userid, _sessionid,

Return Value

,

- ***listadsNetAdminHistory(System.String, System.String, System.String, System.String, System.String, System.String)***

Parameters

_publisherid, _mode, _userID, _sessionID, _StartDate, _EndDate,

Return Value

,

•

editAds_Hosting_Plans(System.String, System.String, System.String, System.String, System.String, System.String, System.String, System.String, System.String, System.String, System.String, System.String, System.String)

Parameters

_Tier1Imps, _Tier1Price, _Tier2Imps, _Tier2Price, _Tier3Imps, _Tier3Price, _Tier4Imps, _Tier4Price, _Tier5Imps, _Tier5Price, _mode, _userid, _sessionid, _display, _Display,

Return Value

,

• *listAdsMsorder(System.String, System.String, System.String)*

Parameters

_userid, _sessionid, _MasterOrderID,

Return Value

,

• *retrievelistAdsMsorder(System.String, System.String)*

Parameters

_userid, _sessionid,

Return Value

,

• *addAdsInvoice(System.String, System.String, System.String, System.String)*

Parameters

_mode, _userid, _sessionid, _Moid,

Return Value

,

•

listAdsApproveSales(System.String, System.String, System.String, System.String)

Parameters

_userid, _sessionid, _status, _ID,

Return Value

,

•

editAdsEditApprove(System.String, System.String, System.String, System.String, System.String, System.String, System.String, System.String, System.String, System.String)

Parameters

_BannerCode, _PayTypeCode, _SaleValue, _ReferenceNumber, _CountryOfSale, _CommisionValue, _SaleStatus, _mode, _userid, _sessionid,

Return Value

,

•

editAdsRebid(System.String, System.String, System.String, System.String, System.String)

Parameters

_MaxBidAmount, _DailyBudget, _mode, _userid, _sessionid,

Return Value

,

•

addAdsCreditAccount(System.String, System.String, System.String, System.String, System.String)

Parameters

_PaymentAmount, _mode, _userid, _UserCode, _sessionid,

Return Value

,

•

addAdsPaymentUN(System.String, System.String, System.String, System.String, System.String, System.String, System.String, System.String, System.String, System.String, System.String, System.String, System.String)

Parameters

_PayType, _CardType, _Name, _Address, _CardNumber, _Expiry, _CCV2, _mode, _userID, _UserCode, _Role, _sessionID, _Status, _OrderCode, _FinalPrice, _Modules,

Return Value

,

NET.OnlineAdvertising.clsReference

Summary description for clsReference

Methods

Constructor:

- *NET.OnlineAdvertising.clsReference*

-

listadsManageAffiliateCategories(System.String, System.String, System.String, System.String)

Parameters

_cp, _rp, _userid, _sessionid,

Return Value

,

-

addadsNewAffiliateCategories(System.String, System.String, System.String, System.String)

Parameters

_CategoryName, _mode, _userid, _sessionid,

Return Value

,

-

listadsManagePaytypes(System.String, System.String, System.String, System.String)

Parameters

_cp, _rp, _userid, _sessionid,

Return Value

,

-

addadsAddPaytypes(System.String, System.String, System.String, System.String, System.String)

Parameters

_PayType, _PayTypeOnScreen, _mode, _userid, _sessionid,

Return Value

,

•

editadsEditPaytypes(System.String, System.String, System.String, System.String, System.String, System.String, System.String)

Parameters

_PayType, _PayTypeOnScreen, _mode, _userid, _sessionid, _PaytypeCode,

Return Value

,

•

editadsEditAffiliateCategories(System.String, System.String, System.String, System.String)

Parameters

_CategoryName, _mode, _userid, _sessionid,

Return Value

,

•

editadsEditAdCategories(System.String, System.String, System.String, System.String, System.String)

Parameters

_AdCategoryName, _Active, _mode, _userid, _sessionid,

Return Value

,

•

addadsNewAdCategories(System.String, System.String, System.String, System.String, System.String, System.String)

Parameters

_AdCategoryName, _Active, _mode, _Role, _userid, _sessionid,

Return Value

,

•

listadsManageAdCategories(System.String, System.String, System.String, System.String, System.String)

Parameters

_cp, _rp, _Role, _userid, _sessionid,

Return Value

,

- ***retrievelistadsManageAdCategories(System.String, System.String, System.String)***

Parameters

_userid, _sessionid, _Display,

Return Value

,

- ***retrievePaytypes(System.String, System.String)***

Parameters

_userid, _sessionid,

Return Value

,

- ***retrievePubPaytypes(System.String, System.String)***

Parameters

_userid, _sessionid,

Return Value

,

- ***editadsEditPreference(System.String, System.String, System.String, System.String, System.String, System.String, System.String, System.String, System.String, System.String)***

Parameters

_NotifySale, _CookieLife, _SignUpThanks, _MassMailLetter, _AffiliateLetter, _AutoSalesApproval, _AutoAffiliateApproval, _AffiliateApprovalLetter, _mode, _userid, _sessionid,

Return Value

,

- ***listAdsLang(System.String, System.String)***

Parameters

_userid, _sessionid,

Return Value

,

- *retrievelistAdsLang(System.String, System.String)*

Parameters

_userid, _sessionid,

Return Value

,

- *listMyPubChannels(System.String, System.String, System.String, System.String)*

Parameters

_CategoryID, _mode, _userid, _sessionid,

Return Value

,

- *listMyExchangeChannels(System.String, System.String, System.String, System.String, System.String)*

Parameters

_userid, _sessionid,

Return Value

,

- *listadsEditChannel(System.String, System.String, System.String, System.String)*

Parameters

_CategoryID, _mode, _userid, _sessionid,

Return Value

,

- *listaffEditChannel(System.String, System.String, System.String, System.String)*

Parameters

_CategoryID, _mode, _userid, _sessionid,

Return Value

,

•

editAds_Xchange_Pref(System.String, System.String, System.String, System.String, System.String)

Parameters

_CreditsPerImp, _SignUpCredits, _mode, _userid, _sessionid,

Return Value

,

• *total(System.String, System.String)*

Parameters

_userid, _sessionid,

Return Value

,

• *listAdsListGateway(System.String, System.String)*

Parameters

_userid, _sessionid,

Return Value

,

• *retrievelistAdsListGateway(System.String, System.String, System.String)*

Parameters

_userid, _sessionid, _dispay,

Return Value

,

• *PersonalizedValue(System.String)*

Parameters

_userCode,

Return Value

,

•

editAdsNaPref(System.String, System.String, System.String, System.String, System.String, System.String, System.String, System.String, System.String)

Parameters

_Commission, _Exchange, _Bonus, _Image, _mode, _userid, _sessionid, _QRole, _hidRole,

Return Value

,

•

addAdsNewChannel(System.String, System.String, System.String, System.String, System.String)

Parameters

_AdCategoryName, _Active, _mode, _userid, _sessionid,

Return Value

,